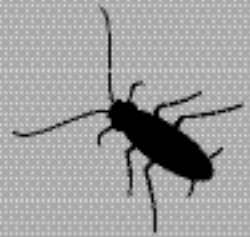


# Gentrol<sup>®</sup> Aerosol



**CONTROLS ROACHES, STORED PRODUCT PESTS, DRAIN FLIES, FRUIT FLIES, AND BEDBUGS**  
**NON-REPELLENT**  
**LONG-TERM CONTROL**  
**COMPATIBLE IN BAITING PROGRAMS**  
**DISSIPATING FOAM ASSURES COMPLETE COVERAGE**  
**TREATS UP TO 1200 SQUARE FEET**  
**FOR PROFESSIONAL USE ONLY**

## SPECIMEN LABEL

**ACTIVE INGREDIENTS:**

(S)-Hydroprene (CAS #65733-18-8) . . . . . 0.36%

**OTHER INGREDIENTS:** . . . . . 99.64%  
 Total. . . . . 100.00%

\* Contains petroleum distillates

EPA Reg No. 2724-484

KEEP OUT OF REACH OF CHILDREN  
**CAUTION**  
 SEE ADDITIONAL PRECAUTIONARY STATEMENTS

**PRECAUTIONARY STATEMENTS**  
**HAZARDS TO HUMANS**  
**AND DOMESTIC ANIMALS**  
**CAUTION**

Harmful if inhaled or absorbed through skin. Avoid breathing spray mist. Causes moderate eye irritation. Avoid contact with eyes, skin, or clothing. Wash thoroughly with soap and water after handling. Remove contaminated clothing and wash clothing before reuse.

<b>FIRST AID</b>	
Call a poison control center or doctor immediately for treatment advice.	
<b>If on skin or clothing</b>	<ul style="list-style-type: none"> <li>•Take off contaminated clothing.</li> <li>•Rinse skin immediately with plenty of water for 15-20 minutes.</li> </ul>

<b>If in eyes</b>	<ul style="list-style-type: none"> <li>•Hold eye open and rinse slowly and gently with water for 15-20 minutes.</li> <li>•Remove contact lenses, if present, after the first 5 minutes, then continue rinsing eye.</li> </ul>
<b>If inhaled</b>	<ul style="list-style-type: none"> <li>•Move person to fresh air.</li> <li>•If person is not breathing, call 911 or an ambulance, then give artificial respiration, preferably by mouth-to-mouth, if possible.</li> </ul>
Have the product container or label with you when calling a poison control center or doctor, or going for treatment. You may also contact 1-800-248-7763 for emergency medical treatment information.	
<b>NOTE TO PHYSICIAN:</b> Contains petroleum distillates. Vomiting may cause aspiration pneumonia. <b>If swallowed:</b> Immediately call a poison control center or doctor. Do not induce vomiting unless told to do so by a poison control center or doctor. Do not give <b>any</b> liquid to the person. Do not give anything by mouth to an unconscious person.	

**PHYSICAL OR CHEMICAL HAZARDS**

Contents under pressure. Do not use or store near heat or open flame. Do not puncture or incinerate container. Exposure to temperatures above 130° F may cause bursting. Do not apply this product in or on electrical portions of equipment due to the possibility of shock hazard.

## DIRECTIONS FOR USE

It is a violation of Federal Law to use this product in a manner inconsistent with its labeling.

## GENERAL INFORMATION

**GENTROL® AEROSOL** contains GENTROL® Insect Growth Regulator. The IGR disrupts the normal development of immature cockroaches, drain flies, fruit flies, bedbugs, and stored product pests (examples of these pests include: Indian meal moths, rice moths, tobacco moths, red flour beetles, confused flour beetles, lesser grain borers, merchant grain beetles, sawtooth grain beetles, warehouse beetles, cigarette beetles, and Dermestid beetles). Roaches and bedbugs exposed to **GENTROL AEROSOL** will become adults incapable of reproducing. **GENTROL AEROSOL** also disrupts the normal life cycle of drain flies, fruit flies, and stored product pests; thus, killing these insects during the pupal stage. In both cases, the cycle of an infestation ends. Use **GENTROL AEROSOL** in areas such as, but not limited to: apartment buildings, bakeries, bottling facilities, breweries, boiler rooms, cafeterias, candy plants, grocery stores, day care centers, hospitals, residential homes, hotels/motels, office buildings, kitchens, laboratories, cereal processing facilities, manufacturing plants, mausoleums, meat and produce canneries, nursing homes, restaurants, schools, locker rooms, stores, taverns, warehouses, pet stores, as well as various modes of transportation, such as aircraft, buses, trucks, trailers, rail cars, and marine vessels.

Use **GENTROL AEROSOL** as a general surface spray, spot, or crack and crevice application.

Prior to using in commercial or residential food areas, please refer to the Food Handling Establishment Applications section of the label. The preparations prior to treatment and the clean-up after application described are also to be followed for residential use.

**GENTROL AEROSOL** is non-repellent and should be considered an important component in a cockroach baiting program. Baits are an important part of a total cockroach control program but are not a complete solution. **GENTROL AEROSOL** can reach those nymphs that fail to forage to baits and the IGR stimulates egg-bearing females to leave the harborage and feed.

Shake well before use. **GENTROL AEROSOL** is a ready-to-use pressurized spray for application to a variety of locations and surfaces to control pests. Apply **GENTROL AEROSOL** as a general surface spray, spot, or crack and crevice application. Use the supplied extension tube for crack and crevice applications. To apply as a general surface or spot application, hold can 10" to 12" away from surface to be treated. Use a sweeping motion over the surface to be treated for complete coverage. This product applies as a light foam that dissipates readily. An oily residue may be apparent in heavy applications. The visibility of the dissipating foam eliminates the possibility of missed areas. For crack and crevice applications, use the supplied extension tube and apply to wall voids, hollow table legs, tube iron, gondola frames, voids, and supports. **GENTROL AEROSOL** is generally non-

staining, but in questionable situations, apply a small amount in an inconspicuous location. Apply **GENTROL AEROSOL** once a month for continuous protection, or more often if conditions warrant.

## GENERAL SURFACE APPLICATION

Apply the **GENTROL AEROSOL** at a rate of 16 ounces per 1200 sq ft of surface area. Apply to areas such as: walls, floors, ceilings, attics, basements, gondolas, and shelving. **NOTE:** Prior to treating around air ducts, shut off ventilation system. Turn on air-handling systems immediately after application.

## SPOT OR CRACK AND CREVICE APPLICATIONS

Apply **GENTROL AEROSOL** as a crack and crevice application using the supplied extension tube. Apply directly to areas such as: wall voids, pipe chases, crevices, and false ceilings. Apply spot treatments to areas such as: storage areas, closets, around water pipes, doors, windows, and behind and under appliances/equipment, furniture and beds.

**To treat bedbugs**, apply to harborage points mentioned above; in addition, under beds, bottom side of box springs (do not treat linens and mattresses), under and behind night stands, to points where carpet and wall meet, cracks in cove base, molding, and other areas where bedbugs harborage. Retreat at 14 days for heavy infestations.

## WAREHOUSES (NON-FOOD)

Apply **GENTROL AEROSOL** as a general surface, spot, or crack and crevice treatment in non-food storage warehouses. Apply to all areas that may harbor pests, including under and between pallets.

## FOOD HANDLING ESTABLISHMENT APPLICATIONS

Apply **GENTROL AEROSOL** as a general surface spray, spot, or crack and crevice treatment in both food and non-food areas of food handling establishments. These establishments are defined as: places other than private residences where exposed food is held, prepared, processed, or served. It also includes areas where food items are: received, prepared, packaged, and stored, as well as enclosed food processing systems (mills, dairies, etc.). For control of drain flies and fruit flies: Apply **GENTROL AEROSOL** to areas of fly breeding. For drains, apply product into and around the downspout and catch basin area. Coat these areas thoroughly as fly larva develop in the scum buildup on the sides of drain pipes. Repeat applications at 2 to 4 week intervals depending upon the severity of infestation.

## SPOT OR CRACK AND CREVICE APPLICATIONS

Prior to application, remove or cover all food items in area to be treated. Do not apply directly to food or food-handling surfaces.

## SURFACE SPRAY APPLICATION

Do not apply directly to food products.

## GENERAL AREA TREATMENTS

Prior to application, remove or cover all food items. Also, cover all food contact surfaces (i.e., equipment, benches, shelves - areas where exposed food may be handled, held, prepared, processed, or served). If left uncovered, these areas must be thoroughly cleaned by

a method capable of removing chemical residues after treatment.

#### **PARTIAL AREA TREATMENTS**

Apply **GENTROL AEROSOL** to partial areas of food handling establishments in cases of small or localized infestations. For partial area treatments, a perimeter of at least 6 feet must be established, from all food handling surfaces.

#### **PANTRY/CABINETS, SMALL FOOD STORAGE AREAS**

Apply as a surface spray, crack and crevice spray, or spot treatment to pantry and cupboard shelves or other areas where food is stored. Prior to spraying, remove all food containers and foodstuffs. Do not replace food containers or foodstuffs until spray has dried. Dispose of any infested food packages or materials.

#### **WAREHOUSES (FOOD)**

Apply **GENTROL AEROSOL** as a general surface spray, spot, or crack and crevice treatment in warehouses where packaged food items are stored in such a way that direct contact with the foodstuff is not anticipated.

#### **STORAGE AND DISPOSAL**

Do not contaminate water, food, or feed by storage or disposal.

**Storage:** Store in a cool area away from children. Do not reuse empty container.

**Pesticide Disposal:** Wastes resulting from the use of this product may be disposed of on site or at an approved waste disposal facility.

**Container Disposal:** Wrap container and put in trash collection. Do not puncture or incinerate.

For more information or in case of emergency, call **1-800-248-7763** or visit our Web site: **[www.zoecon.com](http://www.zoecon.com)**



Wellmark International  
Schaumburg, Illinois U.S.A.



GENTROL® and ZOËCON® are registered trademarks of  
Wellmark International.  
©2005 WELLMARK INTERNATIONAL  
Made in USA

September, 2005  
Schaumburg, IL